



TWO RIVERS FAIRY TRAIL

IN RUIDOSO, NEW MEXICO

Located at the Twin Rivers Park behind the Chamber of Commerce, 720 Sudderth Dr.



✓ CHECK OFF THE FAIRIES AS YOU FIND THEM!

1	4	8	T
2	5	9	T
3	6	10	T
7			

HAPPY HUNTING!

1

SPRAWL



Sprawl is a wood fairy. He shapes and designs the wood from trees that are closest to the forest floor. In shaping and designing the growth of roots and vines, he provides homes and safe havens for all the forest animals, insects and fairies. This fairy has a wicked sense of humor-especially toward humans. He delights in seeing humans trip and stumble over his artistically designed tree roots and intricately woven ground vines.

2

FLURRI



Flurri is a winter fairy. She is a fast, frenzied fairy that brings cold and frost to the forest and all creatures that dwell within it. Flurri rules all things winter in the forest with a snowflake scepter. In the blink of an eye, she can turn rain to snow with her frosty wand. Blanketing the earth with millions of shimmering, diamond crystals, this fairy beckons forth the season, of peace and rest for hibernating forest animals.

3

ASPEN

AMARANIA



Aspen is an ancient fairy with a golden glow. Lifted by gentle summer zephyrs, she flits in, out and amongst the cool, green, leafy canopies of the forest trees. She delights in causing the leaves to tremble and quake. At summer's end, Aspen changes green leaves to golden yellows, bright reds, deep oranges and soft browns. With a glorious celebration of color, she signals the beginning of fall and the season of harvest.

4

BRIAR OAK



Because fairies live in and amongst the forest, all fairies know how important keeping the forest safe and healthy is. All healthy forests have animals-both seen and unseen. Briar oak does everything within her abilities to help these creatures she has grown to love. Briar Oak is a cheerful helper fairy. She loves to sing while she works. Of the many fanciful songs this little fairy sings, her favorites are the lullabies she sings while watching over the newborn babies in the forest nursery while the daddies and mommies are out foraging for food to bring home.

5

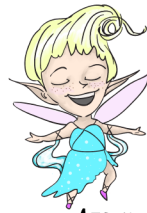
SADE SHOWERS



Sade is the younger sister of Flurri. She is as warm as her sister is cold. With gentle, spring showers she is able to melt the snow and ice her sister left behind. Sade brings the forest to life once more after long, cold, winter months. Hibernating animals awake to the sound of streams and rivers flowing full of melted snow. All within the forest are preparing for the upcoming season of growth, vegetation and flowering. Sade is temperamental and can quickly turn gentle rains into destructive heavy downpours which can cause flooding in streams, rivers and lakes.

6

AIRYN



Fairies live in and amongst the forest trees and plants. They depend on the the butterflies to pollinate and provide continual forest growth for safety and protection. In return, Airyn guards and protects butterflies in all stages of their metamorphosis. By the light of silvery moon, Airyn can be found herding caterpillars from plant to plant while checking on eggs tucked safely into the soft, green folds of new leaves. When necessary, Airyn can mend butterfly wings with silken spider threads. Airyn collects cool dew which she feeds to brand new butterflies. The dew gives these beauties the strength they will need for their first flight into the forest.

7

LUNA KUU



Luna Kuu is a night fairy. She comes out just as the moon begins to rise in the evening sky. Fluttering gently through the forest on silvery, iridescent wings that glow under moonlight, her flight beckons sleep to all of the forest animals that work during the day. She blankets the forest with the calm peace of moonlight. Once the forest is peaceful and the animals are sound asleep, Luna enjoys dancing, all alone, under the bright light of the moon. Luna's dance awakens the night animals and they leave their nests to rummage the night away. Before the sun can rise, Luna finds her nest, tucks her wings beneath her and slumbers the day away.

8

STROMI CURRENT



Stromi Current is a small, playful river fairy. He loves to play in the water searching for fish in need while riding a large, brown trout he calls Salmo. Together, Salmo and Stromi patrol the river continually searching for fish in need of help. Stromi can remove wayward hooks from the mouths of fish as well as untangle them from river debris and fishing line. Upon Salmo's back Stromi enjoys surfing the current. Lucky bystanders can sometimes see Stromi and Salmo jumping up river waterfalls just to ride them back down again.

9

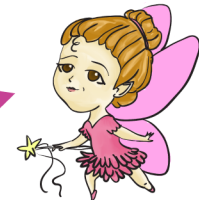
WHISMIE



Whismie travels miles and miles of forest. She travels from place to place repairing and mending damaged insects. Because Whismie is a tinker, she can fix anything. Her expertise however, is her ability to fix insect wings, legs and antennae. Whismie's skills also allow her to repair/rebuild insect domiciles such as hills, tunnels and nests. This fairy has endless amounts of energy and spends her free time tunneling with armies of ants.

10

WILLOW



Willow is a low flying summer fairy that dances above the forest floor. Behind her, she leaves magical circles and rings around and amongst the toadstools and mushrooms that grow in the moist, cool, earth and in the grassy fields surrounding the forest. These beautiful patterns promote growth and beauty. When Willow dances with her friends, these circles, also called fairy rings, can measure several feet across.

Connect with us on [@tworiversfairy](https://twitter.com/tworiversfairy)

T

BURT, BILL & TOM

Keep an eye out for the trolls who have settled by the river from the Misty Mountains!

